

Citizenship in Maths

Population Movement

Migration

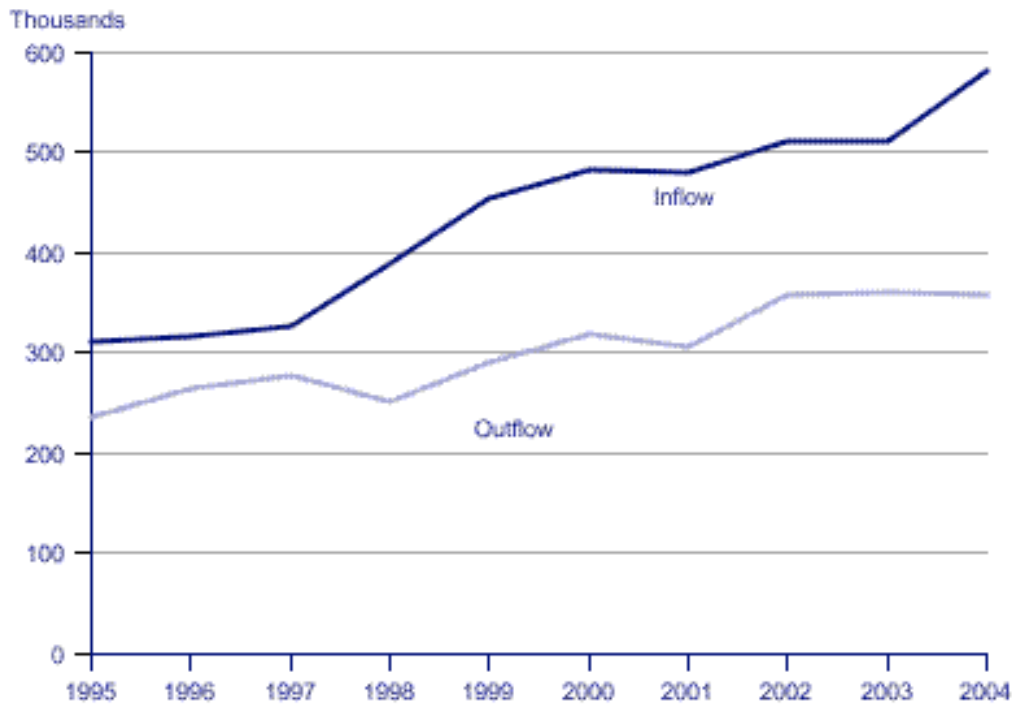
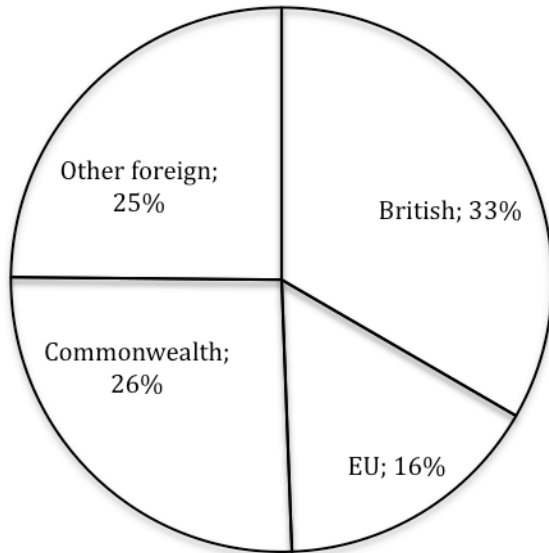


Figure 1: International migration into and out of the UK, 1995 to 2004

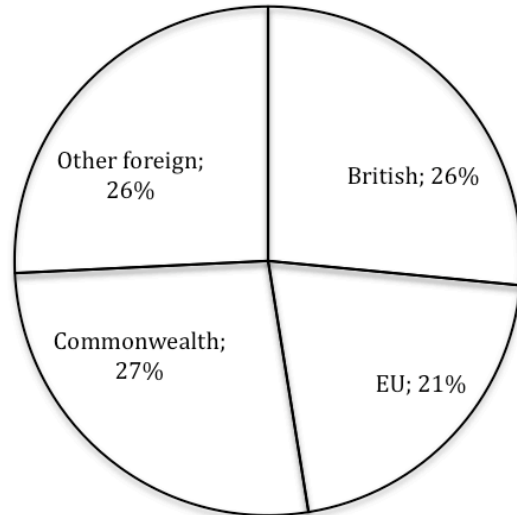
- 1) Describe the trend in the number of people migrating into and out of the UK over the past few years.
- 2) The EU expanded in 2004. This allowed freer access for people from the new EU countries (such as Poland) into the UK. Estimate from the graph how many more people migrated into the UK in 2004 than in 2003.
- 3) Estimate from the graph the difference between the number of people migrating into and out of the UK in 2004.

What are the nationalities of people migrating into Britain?

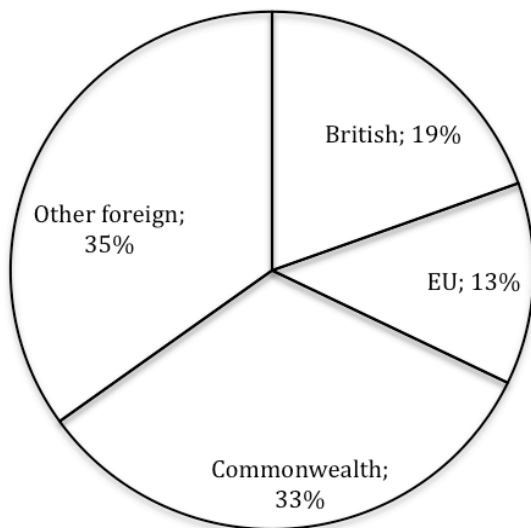
Citizenship of migrants entering Britain in 1991:
Total inflow = 329,000



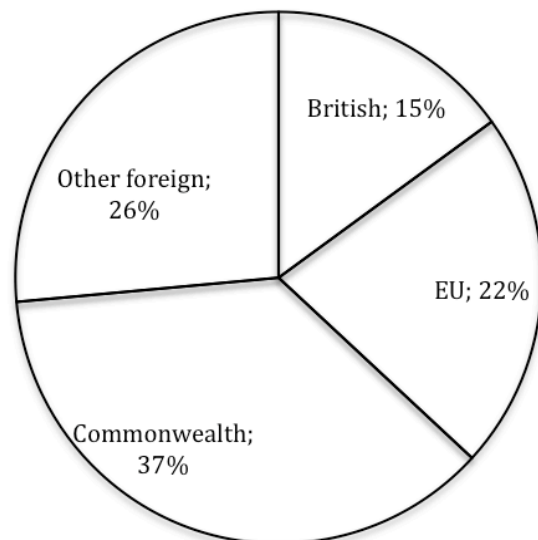
Citizenship of migrants entering Britain in 1998:
Total inflow = 391,000



Citizenship of migrants entering Britain in 2003:
Total inflow = 508,000



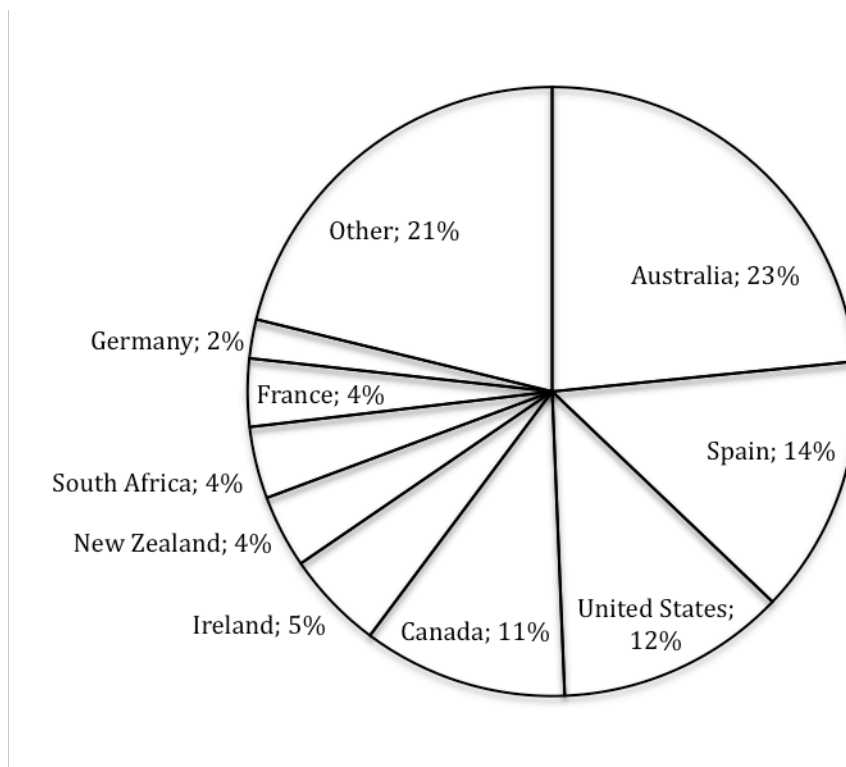
Citizenship of migrants entering Britain in 2004:
Total inflow = 586,000



- 4) Describe what these charts show about how the nationalities of people entering Britain have changed since 1991.
- 5) Discuss possible reasons why people want to come and live and work in Britain.

A place in the sun?

There are an estimated 5,500,000 British people now living abroad. The pie chart shows the countries where they are now living:



- 6) Calculate the number of British people who are now living in Australia.
- 7) Discuss possible reasons why people want to leave Britain and live abroad.